

REPAS GRADING SCALE FOR DIABETIC RETINOPATHY

Diabetic Retinopathy "DR"	0	1	2	3	4	5	9
R	No apparent DR	Mild NPDR Microaneurysms only	Moderate NPDR More than R ₁ but less than R ₂	Severe NPDR Any of the following: • 20 or more retinal lesions in 4 quadrants; • Venous beading in 2 or more quadrants; • IRMA in 1 or more quadrants; AND no neovascularization	PDR 1 or more of the following: • Definite neovascularization • Proliferative vitreous hemorrhage	Circusial DR Regretted PDR with tractional Retinal / Macular Detachment	No view
	Yearly to 9 monthly follow-up	Yearly to 9 monthly follow-up	6 monthly follow-up	Urgent referral to retinal unit			
E	DME Absent No retinal thickening or Hard Exudates in the macula	DME Absent No retinal thickening or Hard Exudates in the macula	Mild DME Retinal thickening or Hard Exudates within the macula but away from fovea (Green zone on the photo to the right)	Moderate DME Retinal thickening or Hard Exudates near but not within the Fovea (Yellow zone on the photo to the right)	Severe DME Retinal thickening or Hard Exudates within the Fovea (Red zone on the photo to the right)		No view
	Yearly to 9 monthly follow-up	Yearly to 9 monthly follow-up	3-6 monthly follow-up	Urgent referral to retinal unit			
P	Laser Photocoagulation	0 No laser done previously	0 No laser done previously	1 Focal Laser	2 Grid laser	3 Panretinal	
A	Anti-VEGF injections	0 No Hx of Anti-VEGF injections	0 No Hx of Anti-VEGF injections	1 — 10 + Number of Anti-VEGF injections given			
S	Vitreoretinal Surgery	0 No previous Vitreoretinal surgeries	0 No previous Vitreoretinal surgeries	1 Vitreoretinal surgery done previously			



Red zone = One disc-diameter circle with the centre of curvature at the centre of the fovea
 Yellow zone = Two disc diameter circle with the centre of curvature at the centre of the fovea (excluding the red zone)
 Green zone = Rest of the macula, including the red and yellow zones

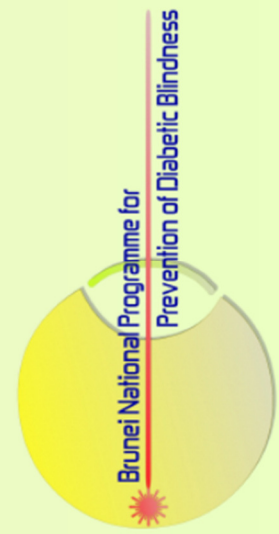


Figure 2: A poster showing REPAS Diabetic retinopathy grading scale and the corresponding management protocol for each score. This poster was distributed to all Eye care facilities, as well as general practice and Endocrine clinics.