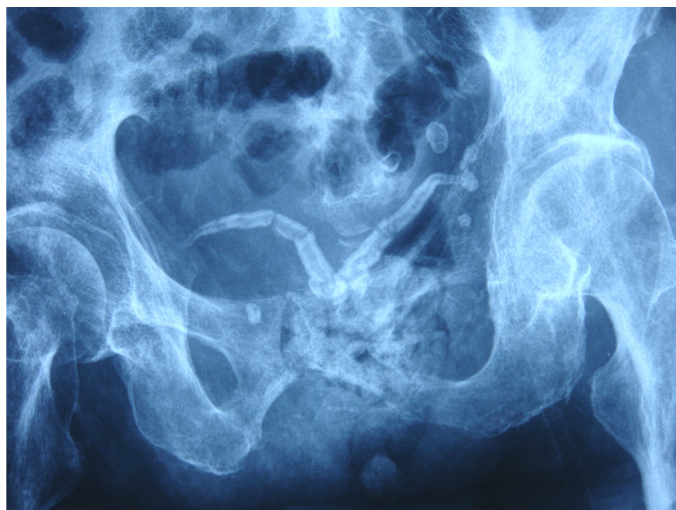


Kai Shing KOH and Vui Heng CHONG



An elderly gentleman with background history of diabetes mellitus with nephropathy, hyperlipidemia, hypertension and chronic kidney disease was admitted with abdominal pain. Plain abdominal radiography showed an incidental finding (**panel**).

What is the diagnosis?

Answer: refer to page 305

Correspondence author: Vui Heng CHONG
Department of Medicine
RIPAS Hospital, Bandar Seri Begawan BA 1710,
Brunei Darussalam.
Tel: +673 2242424 Ext 5233
E mail: chongvuih@yahoo.co.uk